

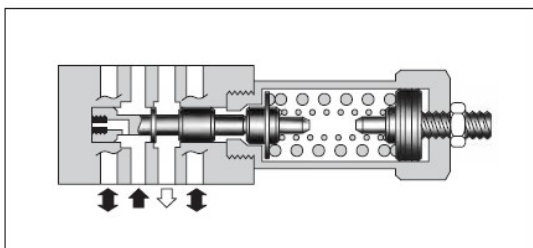
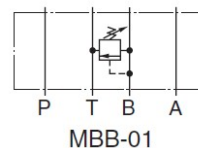
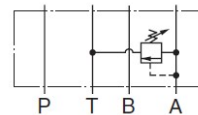
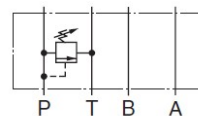


Type	Ventil betegnelse	Ventil Symbol
Magnetstyrt Retningsventil		
	DSG-01-***-*-70	
Trykk ventiler	Trykkbegrensnings Ventil for P-løp YU - MBP-01-*-30	
	Trykkbegrensnings Ventil for A-løp YU - MBA-01-*-30	
	Trykkbegrensnings Ventil for B-løp YU - MBB-01-*-30	
	Trykkreduksjons Ventil for P-løp YU - MRP-01-*-30	
	Trykkreduksjons Ventil for A-løp YU - MRA-01-*-30	
	Trykkreduksjons Ventil for B-løp YU - MRB-01-*-30	
	Sjokkventil Ventil for A / B-løp YU - MBR-01-*-30	
	Sekvensventil Ventil for P-løp YU - MHP-01-*-30	
	Oversenter Ventil for A-løp YU - MHA-01-*-30	
	Trykkbryter For P-løp YU - MJP-01-*-10	
	Trykkbryter For A-løp YU - MJA-01-*-10	
	Trykkbryter For B-løp YU - MJB-01-*-10	
	Volumstrøms Regulerende ventiler	Volumstrømsregulerende Ventil –trykk komp. for P-løp YU –MFP-01-10
Volumstrømsregulerende Ventil –trykk komp. for A-løp YU - MFA-01-X-10		
Volumstrømsregulerende Ventil –trykk komp for A-løp YU - MFA-01-Y-10		
Volumstrømsregulerende Ventil –trykk komp. for B-løp YU - MFB-01-X-10		
Volumstrømsregulerende Ventil –trykk komp. for B-løp YU - MFB-01-Y-10		
Volumstrømsregulerende Ventil –trykk komp for A/B-løp YU - MFW-01-X-10		
Volumstrømsregulerende Ventil –trykk komp. for A/B-løp YU - MFW-01-Y-10		
Strupe / Tilbakeslags Ventil –temp komp. for A-løp YU - MSTA - 01--X-10		
Strupe / Tilbakeslags Ventil –temp komp. for B-løp YU - MSTB - 01--X-10		
Strupe / Tilbakeslags Ventil –temp komp. for A/B-løp YU - MSTW - 01-X-10		

Type	Ventil betegnelse	Ventil Symbol	
Strup / Tilbakeslagsventiler	Strupe- Ventil for P-løp YU - MSP-01-50		
	Strupe / Tilbakeslags Ventil for P-løp YU - MSCP-01-30		
	Strupe / Tilbakeslags Ventil for A-løp YU - MSA-01-X-50		
	Strupe / Tilbakeslags Ventil for A-løp YU - MSA-01-Y-50		
	Strupe / Tilbakeslags Ventil for B-løp YU - MSB-01-X-50		
	Strupe / Tilbakeslags Ventil for B-løp YU - MSB-01-Y-50		
	Strupe / Tilbakeslags Ventil for A/B-løp YU - MSW-01-X-50		
	Strupe / Tilbakeslags Ventil for A/B-løp YU - MSW-01-Y-50		
	Strupe / Tilbakeslags Ventil for A/B-løp YU - MSW-01-XY-50		
	Strupe / Tilbakeslags Ventil for A/B-løp YU - MSW-01-YX-50		
	Tilbakeslagsventiler	Tilbakeslags Ventil for P-løp YU - MCP-01-*-30	
		Tilbakeslags Ventil for T-løp YU - MCT-01-*-30	
Anti-Kavitasjons Ventil for A/B til T-løp YU - MAC-01-50			
Pilotstyrt Tilbakeslags Ventil for A-løp YU - MPA-01-*-40/4001			
Pilotstyrt Tilbakeslags Ventil for B-løp YU - MPB-01-*-40/4001			
Pilotstyrt Tilbakeslags Ventil for A/B-løp YU - MPW-01-*-40/4001			
Plater og boltsett	Blindplate YU - MDC-01-A-30		
	Omløpsplate P-T / A-B-løp YU - MDC-01-B-30		
	Koplingsplate P-A-løp YU - MDS-01-PA-30/3090		
	Koplingsplate P-B - løp YU - MDS-01-PB-30/3090		
	Koplingsplate A-T-løp YU - MDS-01-AT-30/3090		
	Underlagsplater YU - MMC-01-*-40/4080/4090		
	Boltsett YU - MBK-01-*-30/3090		

CETOP 3 Modulventiler

Trykkbegrensningsventiler



Type	Maks. Arbeidstrykk Bar	Maks. Oljestrøm Liter/min.
MBP - 01 - * - 30	210	35
MBA - 01 - * - 30		
MBB - 01 - * - 30		

F-	MRP	-01	-B-	-30	*
Fosfaterester Utelatt for mineralolje	Type	Ventil Størrelse	Trykk område Bar	Design No.	
	MBP : Trykkbegrensning for P - løp	01	C : 35—140 H : 70—210	30	
	MBA : Trykkbegrensning for A - løp				
	MBB : Trykkbegrensning for B - løp				

* = se notat neste side for minimum innstillbart trykk vs. maks. oljestrøm

Merk:

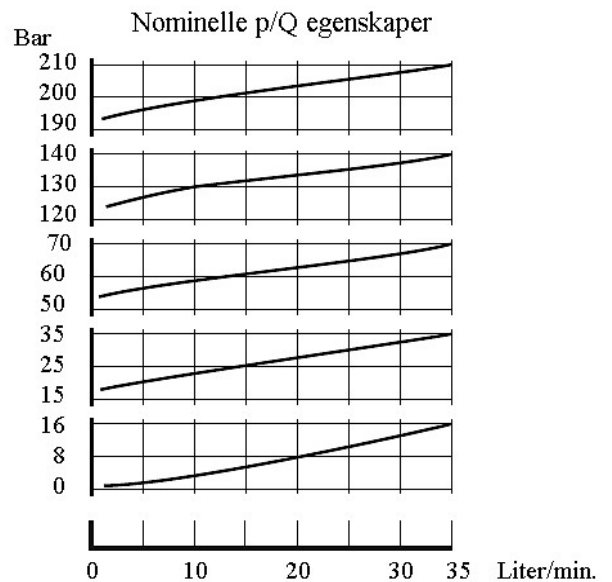
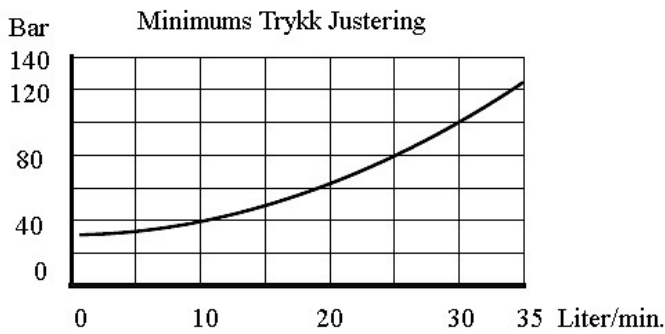
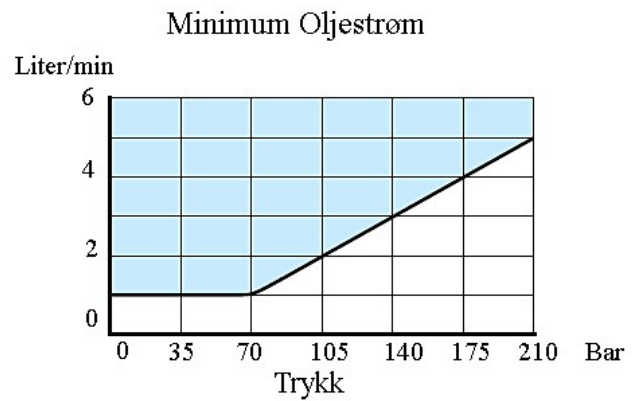
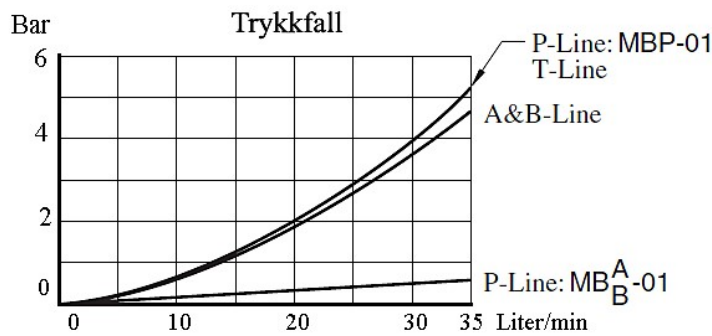
Minimum trykkinnstilling tilsvarer minste innstillbare verdi pluss trykkfall på tankløp.

Til trykkfallet må også medregnes stakkens øvrige ventilers returtrykkfall montert på underlagsplaten

CETOP 3 Modulventiler

Trykkbegrensningsventiler

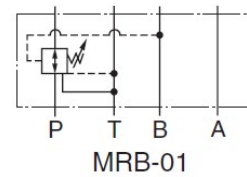
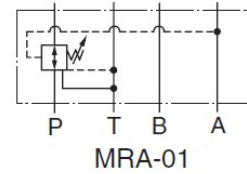
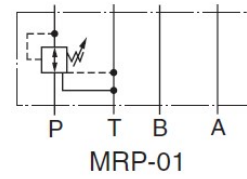
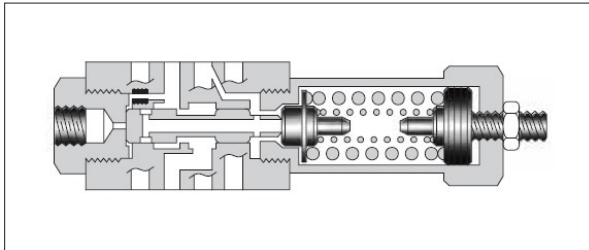
Nominelle ytelses kurver ved 35 cSt



Betegnelsen	Varenr.	Pris
MBP – 01 – C – 30	YU03001	2.856,-
MBP – 01 – H – 30	YU03002	2.856,-
MBA – 01 – C – 30	YU03003	2.856,-
MBA – 01 – H – 30	YU03004	2.856,-
MBB – 01 – C – 30	YU03005	2.856,-
MBB – 01 – H – 30	YU03006	2.856,-
KS - MBP - 01 - 30 O-ring sett	YU02010	399,-

Modulventiler

Trykkreduksjonsventiler



Type	Maks. Arbeidstrykk Bar	Maks. Oljestrøm Liter/min.
MRP - 01 - * - 30	315	35
MRA - 01 - * - 30		
MRB - 01 - * - 30		

F-	MRP	-01	-B-	-30	*
Fosfater Utelatt for mineral olje	Type	Ventil Størrelse	Trykk område Bar	Design No.	
	MRP : Trykkreduksjon for P - løp	01	B: * - 70	30	
	MRA : Trykkreduksjon for A - løp		C : 35 - 140		
	MRB : Trykkreduksjon for B - løp		H : 70 - 210		

Merk:

Minimum trykkinstilling tilsvarer minste innstillbare verdi pluss trykkfall på tankløp.

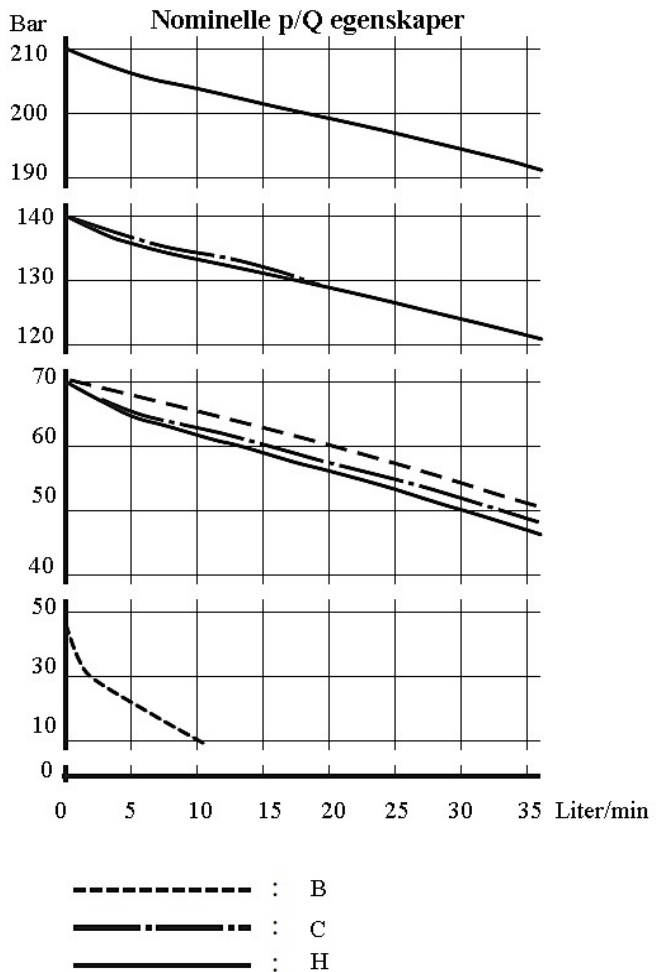
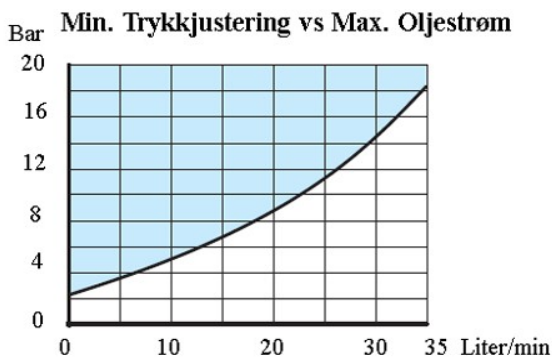
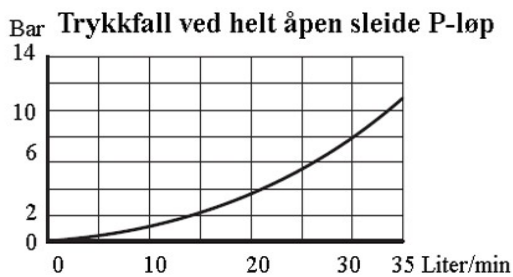
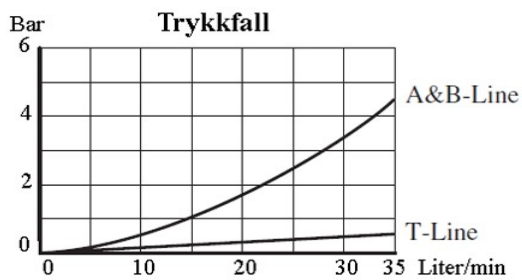
Til trykkfallet må også medregnes stakkens øvrige ventilers returtrykkfall montert på underlagsplaten

Modulventiler



Trykkreduksjonsventiler

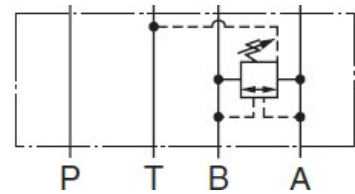
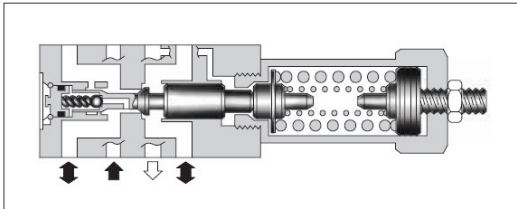
Nominelle ytelses kurver ved 35 cSt



Betegnelse	Varenr	Pris
MRP – 01 – B – 30	YU03007	3.730,-
MRP – 01 – C – 30	YU03008	3.730,-
MRP – 01 – H – 30	YU03009	3.730,-
MRA – 01 – B – 30	YU03010	3.730,-
MRA – 01 – C – 30	YU03011	3.730,-
MRA – 01 – H – 30	YU03012	3.730,-
MRB – 01 – B – 30	YU03013	3.730,-
MRB – 01 – C – 30	YU03014	3.730,-
MRB – 01 – H – 30	YU03015	3.730,-
KS - MBP - 01 - 30 O-ring sett	YU02011	x

Modulventiler

Sjokkventiler



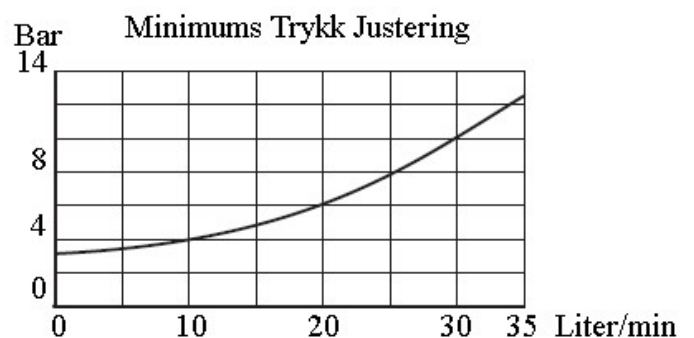
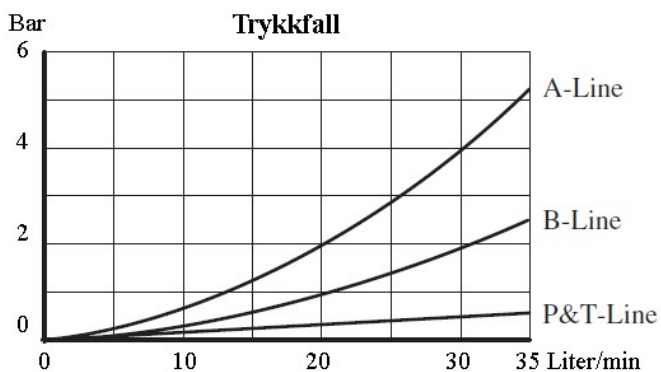
Type	Maks. Arbeidstrykk Bar	Maks. Oljestrøm Liter/min.
MBR - 01 - * - 30	250	35

F-	MBR	-01	-C	-30	*
Fosfater Utelt for mineralolje	Type	Ventil Størrelse	Trykk område Bar	Design No.	
	MBR: Sjokkventil for A - B løp B - A løp	01	C : * - 140 H : 70 - 210	30	

Merk:

Minimum trykkinnstilling tilsvarer minste innstillbare verdi pluss trykkfall på tankløp.

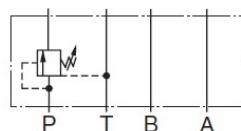
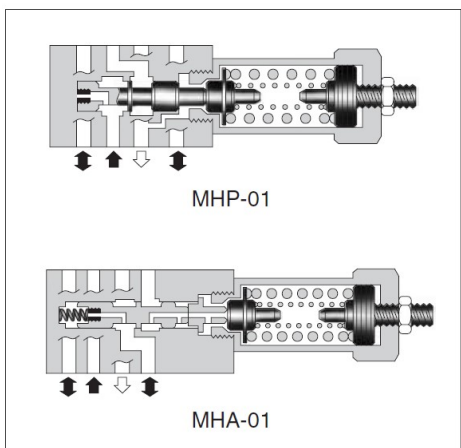
Til trykkfallet må også medregnes stakkens øvrige ventilers returtrykkfall montert på underlagsplaten



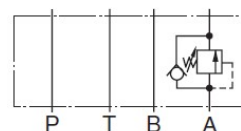
Betegnelse	Varenr.	Pris
MBR - 01 - C - 30	YU03016	4.320,-
MBR - 01 - H - 30	YU03017	4.320,-
KS - MBR - 01 - 30 O-ring sett	YU02012	x

Modulventiler

Sekvensventiler/Oversenterventiler

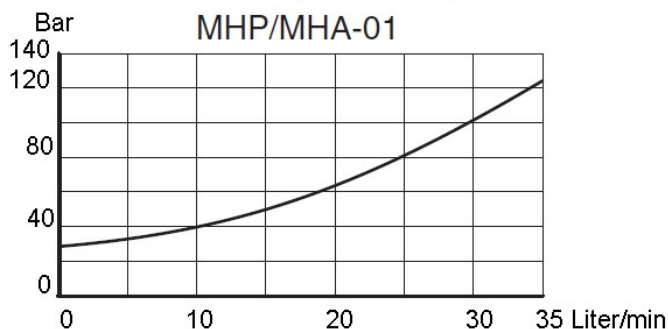


MHP-01

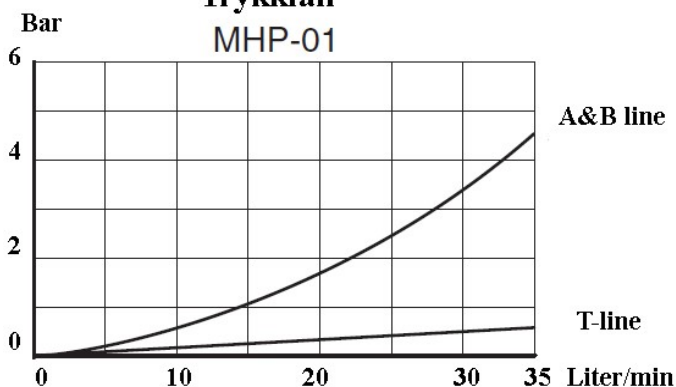


MHA-01

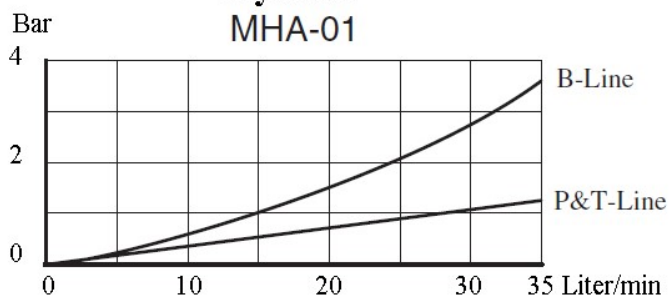
Minimums Trykk Justering



Trykkfall MHP-01



Trykkfall MHA-01

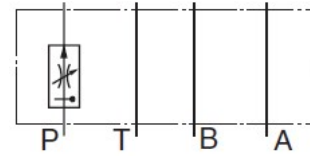


F-	MHP	-01	-C	-30	*
Fosfaterester Utelatt for mineralolje	Type	Ventil Størrelse	Trykkområde Bar	Design No.	
	MHP : Sekvensventil for P - Løp MHA : Oversenterventil for A - Løp	01	C : * - 140 H : 70 - 210	30	

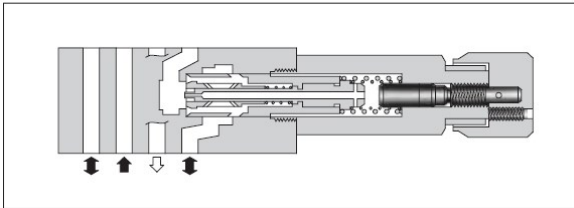
Betegnelse	Varenr.	Pris
MHP - 01 - C - 30	YU03018	4.119,-
MHP - 01 - H - 30	YU03019	4.119,-
MHA - 01 - C - 30	YU03020	3.284,-
MHA - 01 - H - 30	YU03021	3.284,-
KS - MHP - 01 - 30 O-ring sett	YU02013	x
KS - MHA - 01 - 30 O-ring sett	YU02014	x

Modulventiler

Volumstrømsregulerende ventiler Trykk og Temp. kompenserte

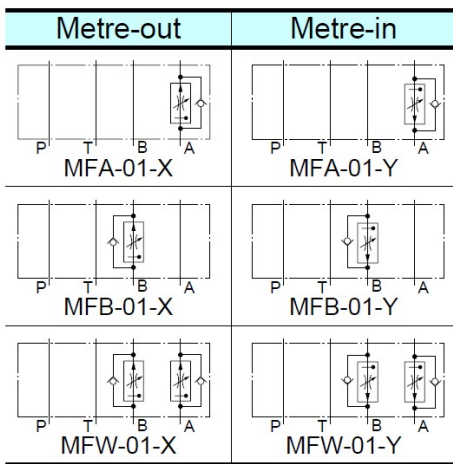


MFP-01

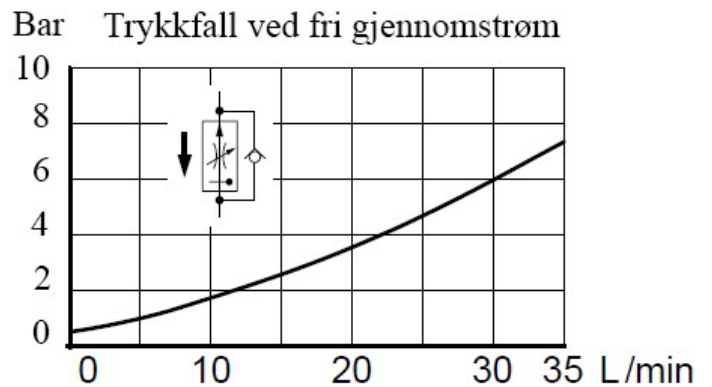
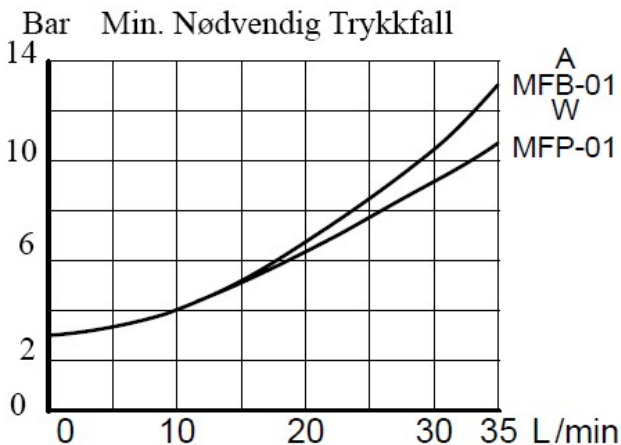
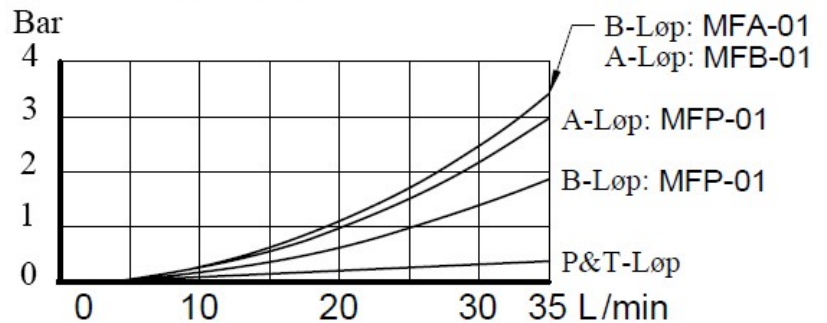


Type	Maks. Arbeidstrykk Bar	Maks. Oljestrøm Liter/min.	Maks. Oljestrøm Liter/min.
MFP-01-10	160	35	—
MFA-01-*-10			35
MFB-01-*-10			
MFW-01-*-10			

F-	MFA	-01	-X	-10	*
Fosfater Utelatt for mineralolje	Type	Ventil Størrelse	Strømnings- retning	Design No.	
	MFP : Volumstrøms regulerende ventil for P - Løp	01	—	10	
	MFA : Volumstrøms regulerende ventil for A - Løp		X: Strupe - Ut Y: Strupe - Inn	10	
	MFB : Volumstrøms regulerende ventil for B - Løp				
	MFW : Volumstrømsregulerende ventil for A+B - Løp				

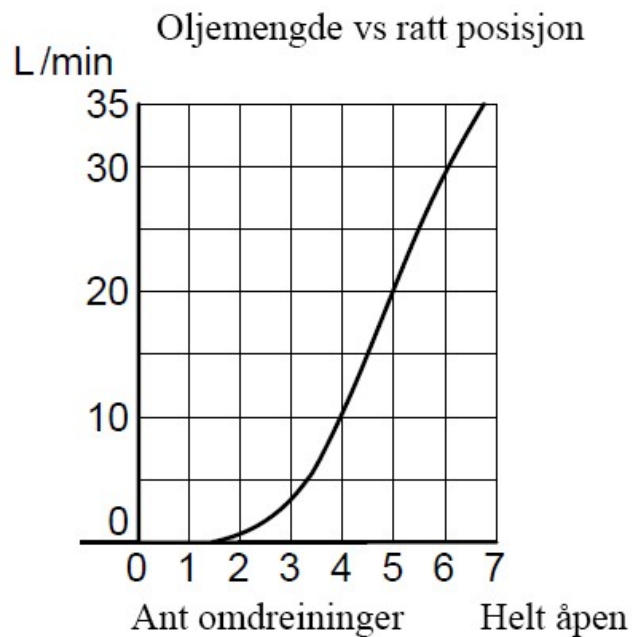
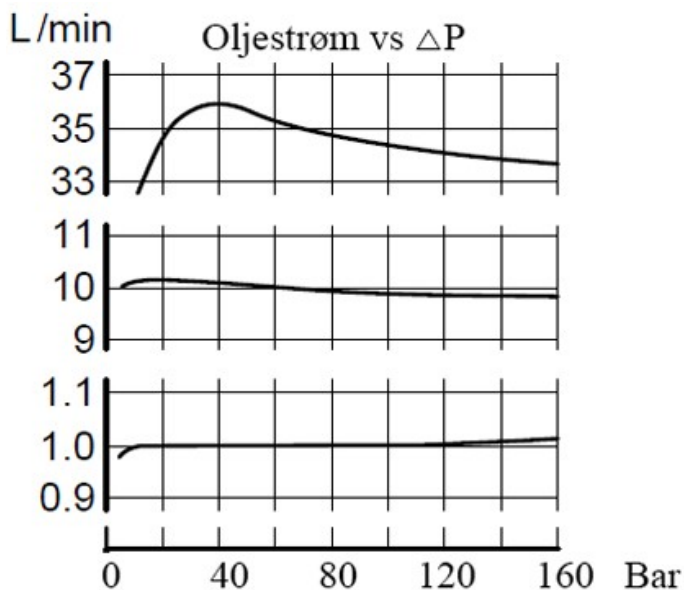


Trykkfall



Modulventiler

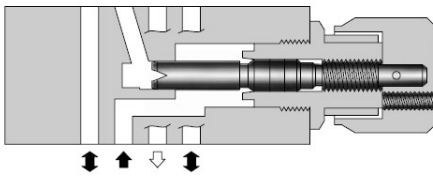
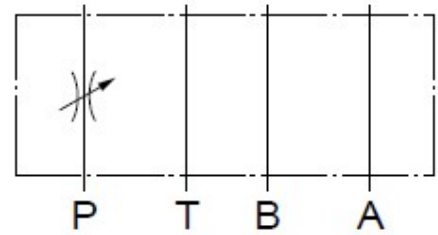
Volumstrømsregulerende ventiler
Trykk og Temp. kompenserte



Betegnelse	Varenr.	Pris
MFP - 01 - - 10	YU03022	8.885,-
MFA - 01 - X - 10	YU03023	8.885,-
MFA - 01 - Y - 10	YU03024	8.885,-
MFB - 01 - X - 10	YU03025	8.885,-
MFB - 01 - Y - 10	YU03026	8.885,-
MFW - 01 - X- 10	YU03027	8.885,-
MFW - 01 - Y-10	YU03028	8.885,-
KS - MFP - 01 - 10 O-ring sett	YU02015	x
KS - MFA - 01 - 10 O-ring sett	YU02016	x
KS - MFW - 01 - 10 O-ring sett	YU02017	x

Modulventiler

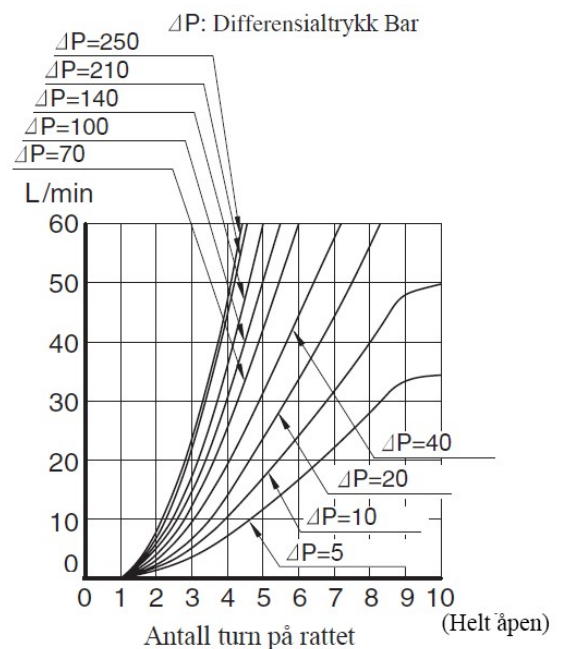
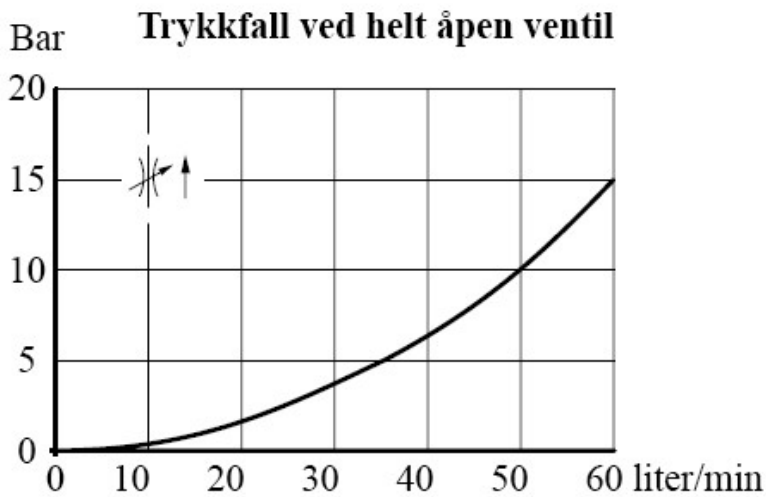
Volumstrømsregulerende Ventiler



Type	Maks. Arbeidstrykk Bar	Maks. oljestrøm liter/min.
MSP - 01 - 50	315	60 *

F-	MSP	-01	-50	*
Fosfater Utelt for mineralolje	Type	Ventil Størrelse	Design No.	
	MSP : Volumstrømsregulerende ventil	01	50	

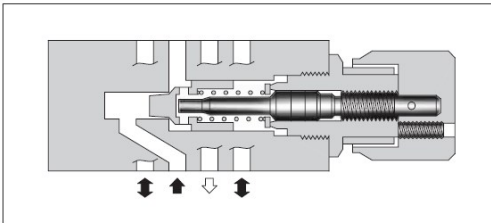
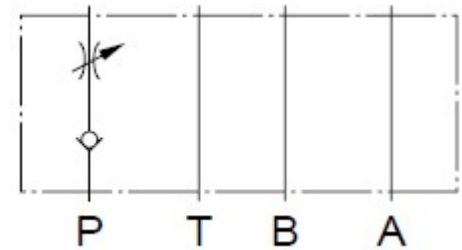
* Ved lavt differensial trykk er maks. oljestrøm begrenset. Se kurve "Trykkfall ved helt åpent ratt"



Betegnelse	Varenr.	Pris
MSP - 01 - 50	YU03029	2.190,-
KS - MSP - 01 - 50 O-ring sett	YU02018	x

Modulventiler

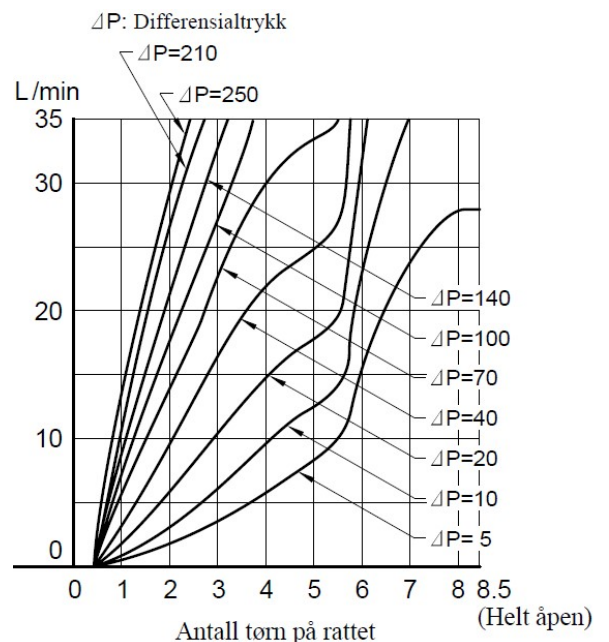
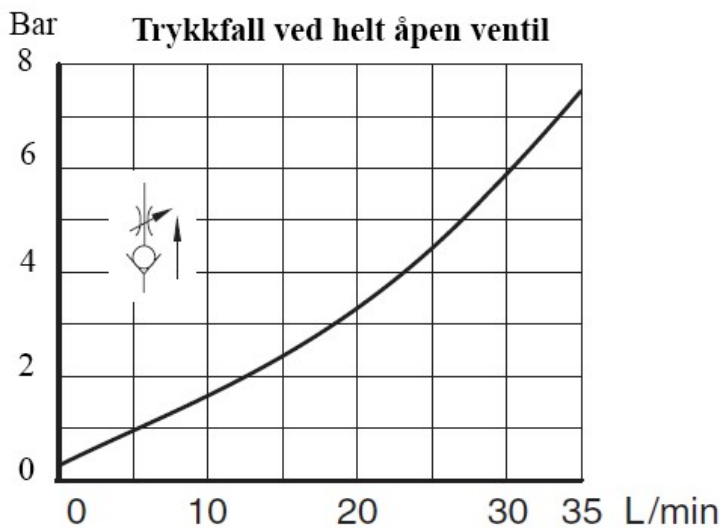
Volumstrømsregulerende Ventiler



Type	Maks. Arbeidstrykk Bar	Maks. Oljestrøm Liter/min
MSCP-01-30	315	35 *

F-	MSCP	- 01	30	*
Fosfater Utelatt for mineralolje	Type	Ventil Størrelse	Design No.	
	MSCP : Volumstrøms- regulerende ventil	01	30	

* Ved lavt differensial trykk er maks. oljestrøm begrenset. Se kurve "Trykkfall ved helt åpent ratt"



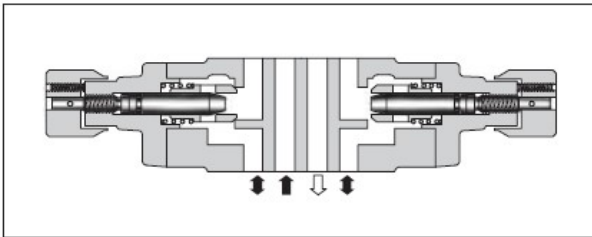
Betegnelse	Varenr.	Pris
MSCP - 01 - 30	YU03030	2.764,-
KS -MSP- 01 -30 O-ring sett	YU02019	x

Modulventiler

Volumstrømsregulerende Ventiler

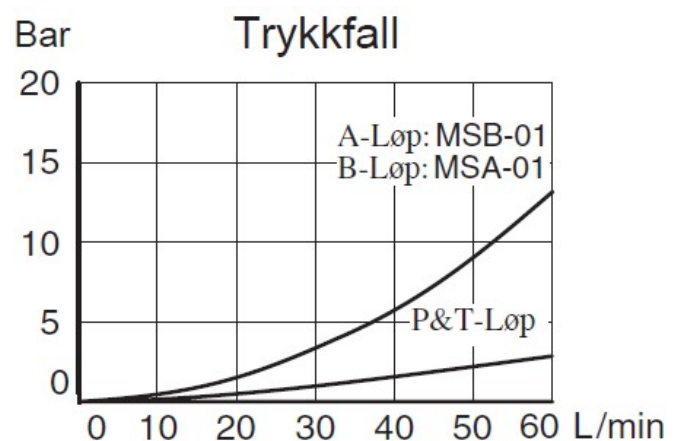
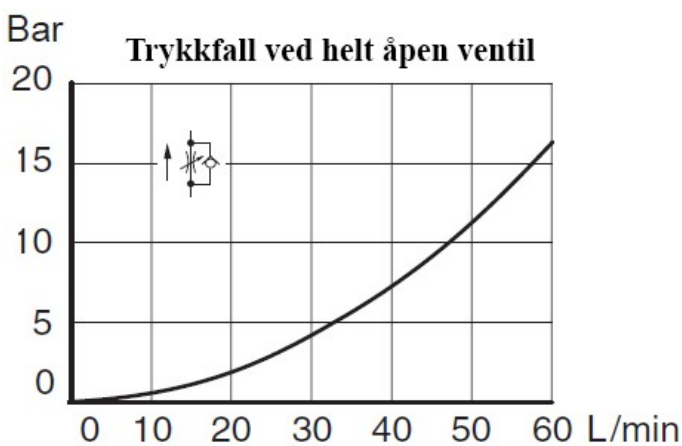


Type	Maks. Arbeidstrykk Bar	Maks. Oljestrøm Liter/min
MSA - 01 - ** - 50	315	60 *
MSB - 01 - ** - 50		
MSW - 01 - ** - 50		



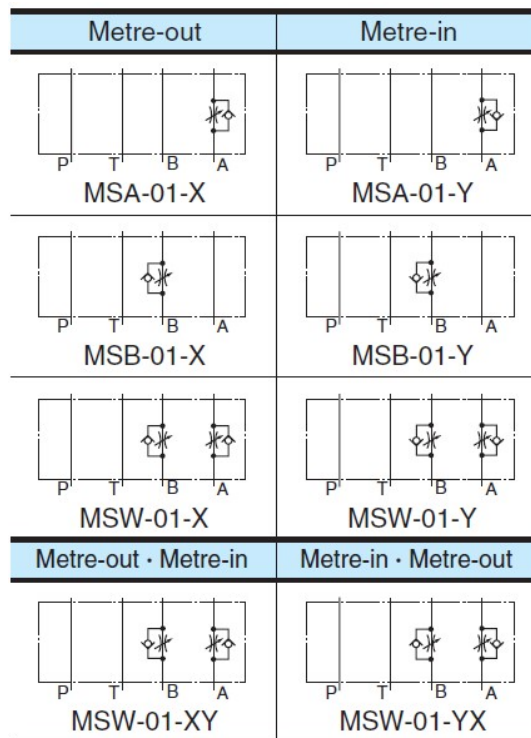
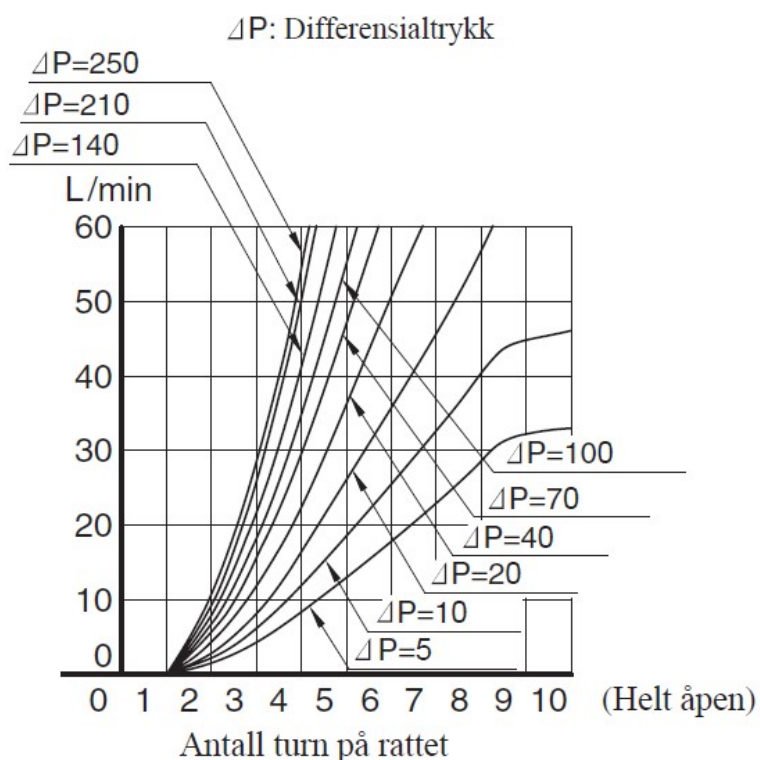
* Ved lavt differensial trykk er maks. oljestrøm begrenset
Se kurve "Trykkfall ved helt

F-	MSW	-01	-X	-Y	-50	*
Fosfaterester Utelatt for mineralolje	Type	Ventil Størrelse	Strømningsretning A - Løp	Strømningsretning B - Løp	Design No.	
	MSA : Strupe - Tilbakeslagsventil for A - Løp	01	X: Strupe - Ut Y: Strupe - Inn	—	50	
	MSB : Strupe - Tilbakeslagsventil for B - Løp		—	X: Strupe - Ut Y: Strupe - Inn		
	MSW : Strupe - Tilbakeslagsventil for A + B - Løp		X: Strupe - Ut Y: Strupe - Inn			
			X: Strupe - Ut	Y: Strupe - Inn		
			Y: Strupe - Inn	X: Strupe - Ut		



Modulventiler

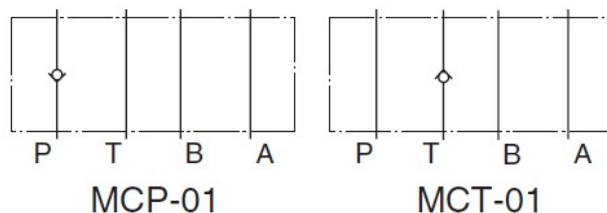
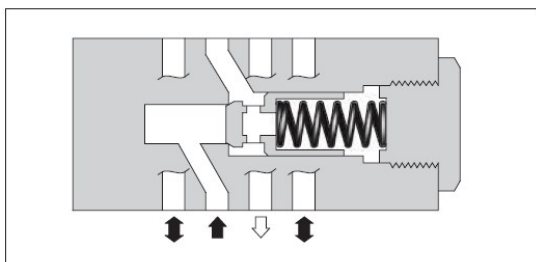
Volumstrømsregulerende Ventiler



Betegnelse	Varenr.	Pris
MSA - 01 - X - 50	YU03031	2.779,-
MSA - 01 - Y - 50	YU03032	2.779,-
MSB - 01 - X - 50	YU03033	2.779,-
MSB - 01 - Y - 50	YU03034	2.779,-
MSW - 01 - X - 50	YU03035	2.779,-
MSW - 01 - Y - 50	YU03036	2.779,-
MSW - 01 - XY - 50	YU03037	2.779,-
MSW - 01 - YX - 50	YU03038	2.779,-
KS - MSA - 01 - 30 O-ring sett	YU02020	x
KS - MSW - 01 - 30 O-ring sett	YU02021	x

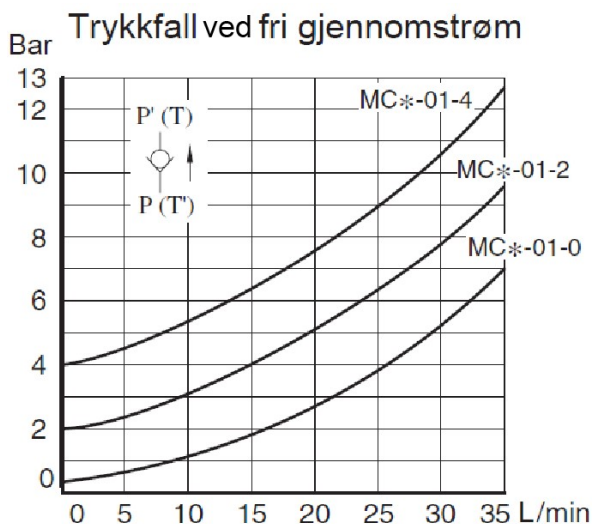
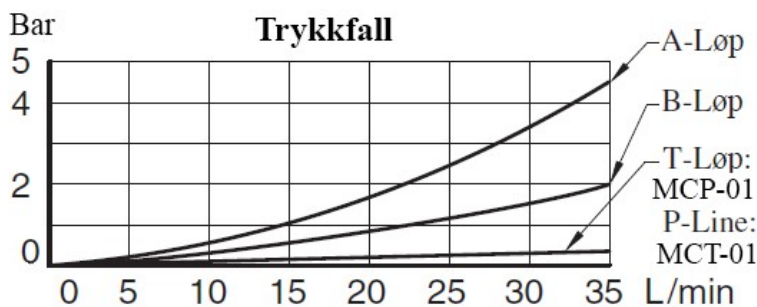
Modulventiler

Tilbakeslagsventiler



Type	Maks. Arbeidstrykk Bar	Maks. Oljestrøm Liter/min
MCP - 01 - * - 30	315	35
MCT - 01 - * - 30		

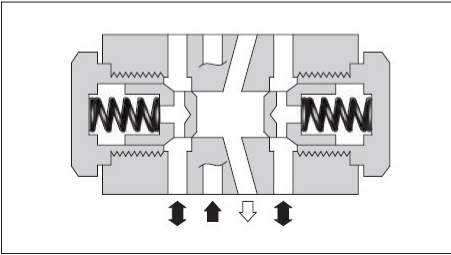
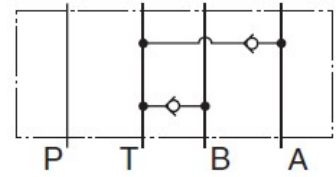
F-	MCP	-01	-0	-30	*
Fosfatester Utelatt for mineralolje	Type	Ventil Størrelse	Åpningstrykk Bar	Design No.	
	MCP : Tilbakeslags Ventil for P-løp	01	0 : 0,35 2 : 2,0 4 : 4,0	30	
	MCT : Tilbakeslags Ventil for T-løp				



Betegnelsen	Varenr.	Pris
MCP - 01 - 0 - 30	YU03039	1.672,-
MCP - 01 - 2 - 30	YU03040	1.672,-
MCP - 01 - 4 - 30	YU03041	1.672,-
MCT - 01 - 0 - 30	YU03042	1.672,-
MCT - 01 - 2 - 30	YU03043	1.672,-
MCT - 01 - 4 - 30	YU03044	1.672,-
KS - MCP - 01 - 30 O-ring sett	YU02022	x

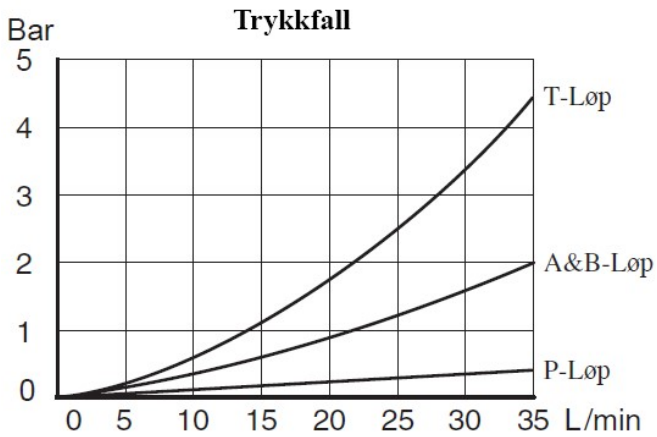
Modulventiler

Anti-Kavitasjonsventiler



Type	Maks. Arbeidstrykk Bar	Maks. Oljestrøm Liter/min.
MAC - 01 - 30	315	35

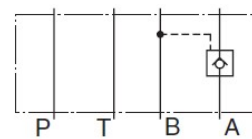
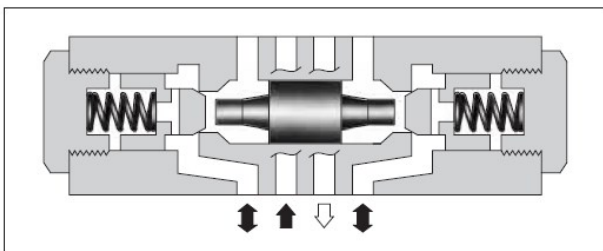
F-	MAC	-01	-30	*
Fosfater Utelatt for mineralolje	Type	Ventil Størrelse	Design No.	
	MAC : Anti Kavitasjon	01	30	



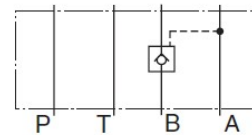
Betegnelse	Varenr.	Pris
MAC - 01 - 30	YU03045	2.714,-
KS - MAC - 01 - 30 O-ring sett	YU02023	x

Modulventiler

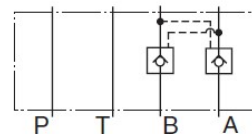
Pilotstyrt Tilbakeslagsventiler



MPA-01



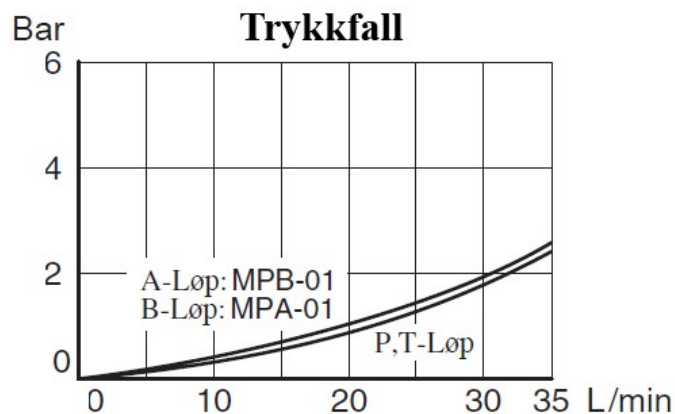
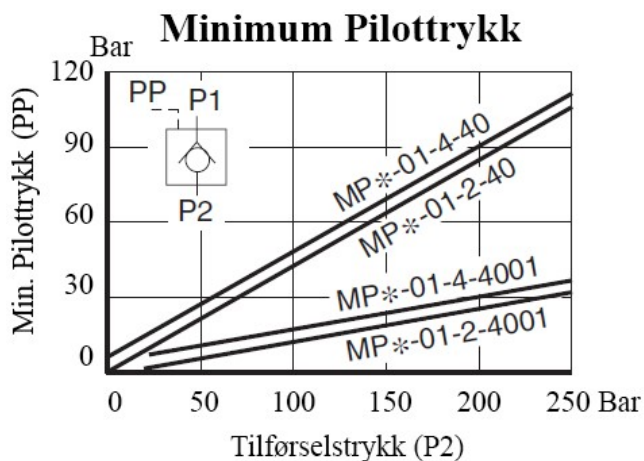
MPB-01



MPW-01

Type		Maks. Arbeidstrykk Bar	Maks Oljestrøm Liter/min.
Standard	MP* - 01 - * - 40	315	35
Lavt Åpningstrykk	MP* - 01 - * - 4001		

F-	MPA	-01	-2	-40	*
Fosforester Utelatt for mineralolje	Type	Ventil Størrelse	Åpnings Trykk Bar	Design No.	
	MPA : Pilotstyrt Tilbakeslagsventil for A-løp MPB : Pilotstyrt Tilbakeslagsventil for B-løp MPW : Pilotstyrt Tilbakeslagsventil for A + B-Løp	01	2 : 2,0 4 : 4,0	40 Standard 4001 Lavt Pilottrykk Utgave	

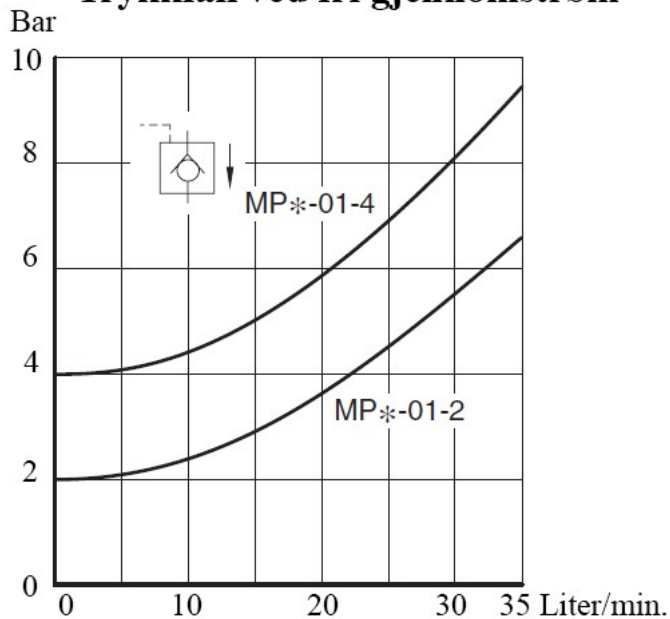


Modulventiler

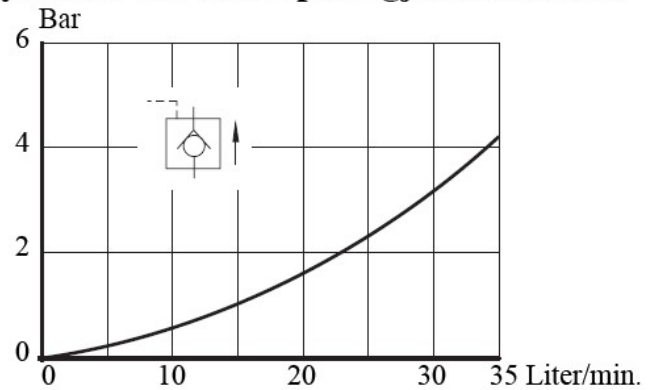
Pilotstyrt Tilbakeslagsventiler



Trykkfall ved fri gjennomstrøm



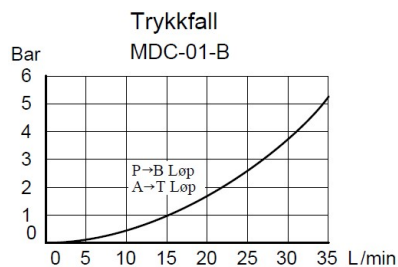
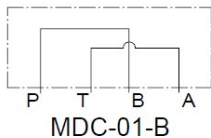
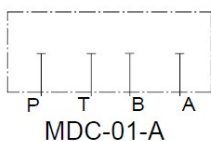
Trykkfall ved Pilotåpnet gjennomstrøm



Betegnelse	Varenr.	Pris
MPA - 01 - 2 - 40	YU03046	2.800,-
MPA - 01 - 2 - 4001	YU03047	2.800,-
MPA - 01 - 4- 40	YU03048	2.800,-
MPA - 01 - 4- 4001	YU03049	2.800,-
MPB - 01 - 2 - 40	YU03050	2.800,-
MPB - 01 - 2 - 4001	YU03051	2.800,-
MPB - 01 - 4- 40	YU03052	2.800,-
MPB - 01 - 4 - 4001	YU03053	2.800,-
MPW - 01 - 2 - 40	YU03054	2.800,-
MPW - 01 - 2 - 4001	YU03055	2.800,-
MPW - 01 - 4 - 40	YU03056	2.800,-
MPW - 01 - 4 - 4001	YU03057	2.800,-
KS - MAC - 01 - 30 O-ring sett	YU02024	x

Modulventiler

Topplater

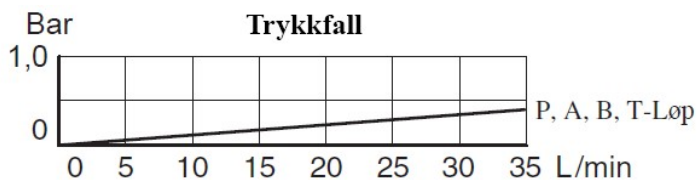


Type	Maks. Arbeidstrykk Bar	Maks. Oljestrøm Liter/min.
MDC - 01 - * - 30	315	35

F-	MDC	-01	-A	-30	*
Fosfaterester Utelatt for mineralolje	Type	Plate Størrelse	Type Plate	Design No.	
	MDC : Topplate	01	A : Blindplate B : Omløpsplate	30	

Betegnelse	Varenr.	Pris
MDC - 01 - A - 30	YU03038	X
MDC - 01 - B - 30	YU03039	X

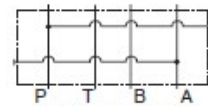
Målepunktsplater



Type	Maks. Arbeidstrykk Bar	Maks. Oljestrøm Liter/min.
MDS - 01- * - 30	315	35

F-	MDS	-01	-PA	-30	*
Fosfaterester. Utelatt for mineralolje	Type	Ventil Størrelse	Type Plate	Design No.	
	MDS : Målepunktsplate	01	PA : P + A Løp PB : P + B Løp AT : A + T Løp	30	

Graphic Symbols



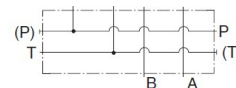
Betegnelse	Varenr.	Pris
MDS - 01 - PA - 30	YU03040	X
MDS - 01 - PB - 30	YU03041	X
MDS - 01 - PAT - 30	YU03042	X

Modulventiler

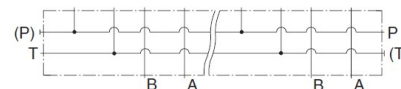
Monteringsplater



Graphic Symbols



MMC-01-1



MMC-01-2-10

MMC	-01	-6	-40	*
Type	Størrelse	Antall Ventiler	Design No.	Design Standard
MMC	01	1 - 10 stk ventiler	40	Europeisk; M5 + R3/8 BSP

Betegnelse	Varenr.	Pris
MMC - 01 - 1 - 40	YU03043	*
MMC - 01 - 2 - 40	YU03044	*
MMC - 01 - 3 - 40	YU03045B	*
MMC - 01 - 4 - 40	YU03046	*
MMC - 01 - 5 - 40	YU03047	*
MMC - 01 - 6 - 40	YU03048	*
MMC - 01 - 7 - 40	YU03049	*
MMC - 01 - 8 - 40	YU03050	*
MMC - 01 - 9 - 40	YU03051	*
MMC - 01 - 10 - 40	YU03052	*

*= Pris på forespørsel